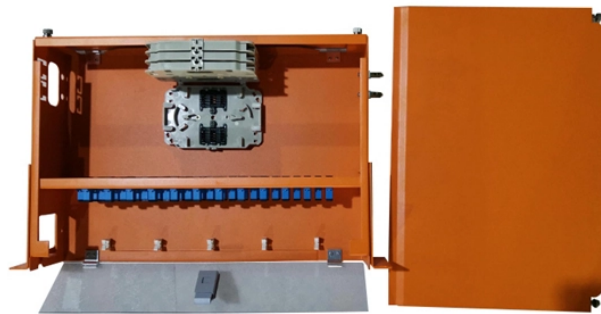


Cable tray three-proof inspection



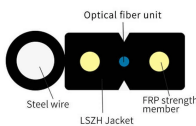
Cable tray three-proof inspection



The inspection of cable tray earthing and continuity test points is a critical aspect of electrical systems and installations, ensuring the safety and reliability of power distribution networks.



A generic guideline developed by the Cable Tray Institute indicates that cable trays should not be filled in excess of 40-50% of the inside area of the tray or of the tray's maximum weight based on the cable ...



Cable trays can provide a safe structure for a wiring distribution system. If not designed or installed properly, wiring inside cable trays may pose hazards such as fire, electric shock and sudden blast ...



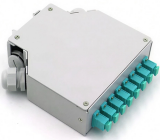
Covers construction and test requirements for continuous, complete nonmetallic systems of ladder, ventilated, solid bottom cable trays, or channel type trays, intended for the support of power or ...



Step-by-step instrumentation cable tray installation guide with safety tips, standards, inspections, and downloadable Excel checklist.



Below is a comprehensive checklist of the most important items to verify: □□ 1. Type of Cable Tray • Ensure the type (perforated / ladder / enclosed) matches the design intent. • Verify the...



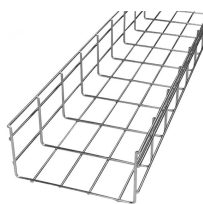
This document provides an inspection test plan for cable tray installation on the Riau GFPP 275MW IPP Project.



This comprehensive checklist helps facility managers and maintenance personnel identify potential issues with fire-rated cable tray covers before they lead to compromised fire safety, electrical ...



A thorough cable tray inspection checklist is essential for maintaining system safety and efficiency. By breaking down each step and emphasizing its ...



Ensure the safety and efficiency of your electrical systems with this comprehensive guide on the inspection and evaluation of cable trays. Learn the steps, benefits, and best practices.



In this detailed guide, we'll explore the essential inspection methods for cable trays, focusing on maintaining their structural integrity, load-bearing capacity, fire resistance, and more.

Contact Us

For more information, pricing, or custom solutions, please contact us:

Website: <https://samastersbaseball.co.za>

Email: sales@samastersbaseball.co.za

Phone: +27 63 874 2095

Address: 15 Innovation Drive, Technopark, Stellenbosch, 7600, South Africa

This document is for informational purposes only. Specifications subject to change without notice.

