

## Cable tray support project near Ping an



## Cable tray support project near Ping an



Snake Tray has been designing and manufacturing cable trays (cable management systems), power distribution and enclosures since 1996! Our goal is to provide our customers with cost-effective ...



Reliable support systems for cable tray and busbars, designed for electrical and mechanical installations. Available in corrosion-resistant coatings.



Need help selecting the right cable ladder or -tray for your project? We offer a wide range of cable tray systems to support tubing, electrical cables and instrumentation.



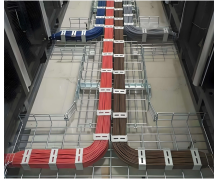
PHP's cable tray support system is engineered to sustain various sizes of cable runs on your rooftop. PHP is the leader in cable tray support systems.



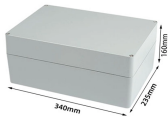
The Cable Tray Institute (CTI) was founded in 1991 to support the cable tray industry by engaging in research, development, education, and the dissemination of information designed to promote, ...



Eaton offers a wide variety of electrical and mechanical support systems for facility sub-system systems for middle east oil and gas, industrial and commercial markets, including B-Line series cable ladder, ...



As buildings house more and more devices and systems requiring ...



Full MEP/FP/SA services to design a new elevated catwalk and cable tray support system (740 ft. long, and 18 ft. AFF) in the main corridor of an existing data center.



As buildings house more and more devices and systems requiring structured cabling, the need for sturdy cable tray support systems is growing. Our offerings suit cable trays in various widths and can be ...



No other cable tray or cable bus manufacturer can match the experience, engineering proficiency or manufacturing capabilities of MP Husky. Our team of knowledgeable and experienced engineers ...



HDT steel cable tray, for heavy duty job, comes in standard height of 50 and 100mm. FCT cable tray made of corrosion resistant fibre reinforced plastic, comes in standard height of 50mm and 80mm. ...



Contact us today for your custom or standard sized support bracket needs. Supports should be located so that connectors (splice joints) between horizontal runs fall between the support point and quarter ...

## Contact Us

For more information, pricing, or custom solutions, please contact us:

Website: <https://samastersbaseball.co.za>

Email: [sales@samastersbaseball.co.za](mailto:sales@samastersbaseball.co.za)

Phone: +27 63 874 2095

Address: 15 Innovation Drive, Technopark, Stellenbosch, 7600, South Africa

This document is for informational purposes only. Specifications subject to change without notice.

