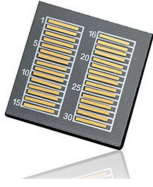


## Cable tray hole spacing standard



## Cable tray hole spacing standard



Explore the essential cable tray support spacing requirements for safe and efficient installations. Learn NEC guidelines for perforated, ladder, and wire mesh trays.



As per the NEC, the maximum allowable rung spacing is 9 inches (230 mm) when cable tray carries sin-gle-conductor cables of 1/0 to 4/0 AWG (American Wire Gauge) (Appendix I).



NEMA VE 1-2017 Specifies requirements for metal cable trays and associated fittings designed for use in accordance with the rules of Canadian Electrical Code, Part I and the National Electrical Code®



Support spacing for cable trays must align with the manufacturer's instructions, as outlined in NEC 392.30 (A). Generally, standard trays require supports every 6 to 10 feet, while ...



Discover the essential cable tray spacing requirements for safe and efficient installation. Learn key standards, horizontal and vertical spacing, and more.



Cable tray system design shall 269 comply with National Electrical Code® (NEC®) Article 392, NEMA BI-50015 (formerly VE 1), and NEMA 270 FG 1, and follow safe work practices as described in NFPA ...



Install expansion connectors where cable trays cross building expansion joints and in cable tray runs that exceed recommended dimensions. Space connectors and set gaps in accordance with ...



Tray-rated cables are required for cable tray installation, so using a channel cable tray system or wire mesh system for exits may be more convenient and economical.



IEEE 576 - This standard describes recommended practice for installation, termination and testing of insulated power cables in cable trays used in industrial and commercial applications.



Commonly called the Load Class, this defines the load-carrying capability of the tray for a specific support span distance. The design and cost of the cable tray is greatly affected by this designation.

## Contact Us

For more information, pricing, or custom solutions, please contact us:

Website: <https://samastersbaseball.co.za>

Email: [sales@samastersbaseball.co.za](mailto:sales@samastersbaseball.co.za)

Phone: +27 63 874 2095

Address: 15 Innovation Drive, Technopark, Stellenbosch, 7600, South Africa

This document is for informational purposes only. Specifications subject to change without notice.

