

Cable tray funnel 400200



Cable tray funnel 400200



Release DYNAMIC, ETIM-10.0
2BARSKInstallDataSahkonumerot Features ...
Synonyms Tee funnel for cable tray



When fitting cable trays and their accessories, the products are cut on site to create changes of direction, adjust sections, etc. Damage can also occur during handling; as a result, both the ...

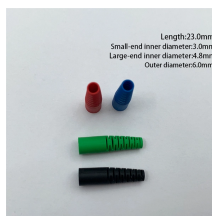


SUPPORTS
DIN RAIL INSTALLATION

Over the past 55+ years, MP Husky US Cable Tray has engineered and manufactured the most reliable, highest quality, cost effective and innovative cable trays systems available.

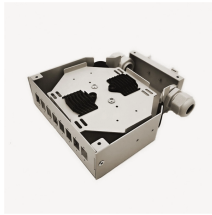


Choose from our selection of cable trays, including over 850 products in a wide range of styles and sizes. Same and Next Day Delivery.



Length:23.0mm
Small-end inner diameter:3.0mm
Large-end inner diameter:4.0mm
Outer diameter:6.0mm

For high mechanical requirements, metal outlet funnels or steel outlet funnels are suitable. For complex tray routing, it is worth considering vertical branches or 90° rotated variants in order to make optimal ...



Unlike other instrumentation channel tray, the KwikSplice cable channel can be cut and spliced at any point along the tray, simplifying field modification. Plus, it is available with perforated holes along the ...



Shop Our Inventory Of Cable Tray Online. Graybar Is Your Trusted Distributor For Cable Tray And Fittings.



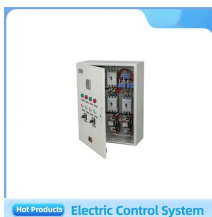
Its design includes innovative splice components that can reduce the need for supports and brackets, enable fast, oneperson installation and lower overall costs. Its I-beam and welded construction offers ...



From heavy power cable pathways on oil drilling platforms to data center cabling, explore Cablofil® Wire Mesh Cable Tray that's strong yet easy to install.



Cut, bend, and connect the wire mesh trays to route cable and hose in configurations such as curves, slopes, and tees. They are a lightweight option for organizing bundles of cable and hose while ...



Aluminum cable channel is perfect for industrial installations with limited cables. Ribbed Splices are stronger and allow for longer spans. Optional snap in hardware speeds up installation.

Contact Us

For more information, pricing, or custom solutions, please contact us:

Website: <https://samastersbaseball.co.za>

Email: sales@samastersbaseball.co.za

Phone: +27 63 874 2095

Address: 15 Innovation Drive, Technopark, Stellenbosch, 7600, South Africa

This document is for informational purposes only. Specifications subject to change without notice.

