

Burkina Faso Customs Cost Tunable Optical Module LPO



Overview

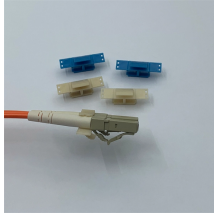
Calculate accurate Burkina Faso Tariff and compliance costs instantly using official government tariff schedules. Know exactly what documents you need and which regulations apply before you ship our AI identifies product-specific compliance requirements instantly. Want to save time?

Ship it with us today?

When shipping a package internationally from, your shipment may be subject to a custom duty and import tax. The FAIM label is your global assurance for a smooth, safe and comprehensive relocation process. Diplomats must apply for diplomatic exemption at the Department of Foreign Affairs in Burkina Faso as soon as the shipment arrives in the country and that customs provides the SOMMIER. Embassies worldwide by Commerce Department, State Department and other U. agencies' professionals The customs laws and regulations of Burkina Faso are governed by the WAEMU. This guide aims to provide you with all the information you need to know when sending a shipment to (BURKINA FASO) using our calculation tools and professional knowledge.

Tariffs refer to the taxes levied by BURKINA FASO on goods entering or leaving its borders in accordance with local laws. including week-ends and public holidays) DAYS AFTER FREE DAYS ARE IN CALENDAR DAY (i.

Burkina Faso Customs Cost Tunable Optical Module LPO



Les liens ci-dessous correspondent aux différentes sections dans la table des matières pour le tarif harmonisé. Cliquer sur un lien va charger les détails de chapitre correspondant.



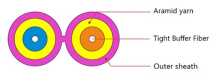
This structure classifies goods into four main categories to streamline regional trade and simplify customs procedures for SME importers. The system emphasizes transparency while protecting ...



1Voir annexe V. Arrêté n° 9 de Janvier 1963. 3 Voir annexe XII, Arrêté n° 348/MF-D du 24 Décembre 1965. 4 Voir Article VII - Arrête n° 348/MF-D du 24 Décembre 1965. 5Voir annexe - Raabo n° AN VI ...



This guide aims to provide you with all the information you need to know when sending a shipment to (BURKINA FASO) using our calculation tools and professional knowledge.



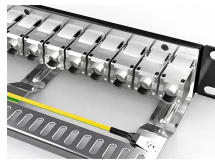
Learn how to buy and sell goods in Burkina Faso, including information on the import and export procedures and taxes, customs and international conventions.



Importers can apply for an advance ruling, though the process can be lengthy. Includes customs regulations and contact information for this country's customs office.



IMPORT - ALL PLACES TARIFF IN XOF FREE DAYS ARE IN CALENDAR DAY (i.e. including week-ends and public holidays) DAYS AFTER FREE DAYS ARE IN CALENDAR DAY (i.e. ...



Free Burkina Faso tariff calculator and customs duty calculator. Estimate import tax, import duties, customs fees, and Burkina Faso import duty rates instantly.



For all returning Burkinabe diplomats: In Burkina Faso, taxes and duties on imported vehicles amount to 2.3% of the CIF* value for the first vehicle and to 48% of the CIF* value for the second vehicle.

Contact Us

For more information, pricing, or custom solutions, please contact us:

Website: <https://samastersbaseball.co.za>

Email: sales@samastersbaseball.co.za

Phone: +27 63 874 2095

Address: 15 Innovation Drive, Technopark, Stellenbosch, 7600, South Africa

This document is for informational purposes only. Specifications subject to change without notice.

