

Botswana Optical Cable Joint Protection Box



Botswana Optical Cable Joint Protection Box



It is compact size, good appearance, provides extremely economical and optimal protection for exposed single fiber connectors. Encompass everything from distribution terminals to drop cables, ...



The simple and innovative design gives the boxes functionality, quality and extreme versatility. They are suitable for both indoor (buildings, technical rooms, etc.) and outdoor installations (wall, pole, ...



Compact and aesthetically pleasing, it provides economical and ...



This compact, rugged kit is specifically designed for FTTH drop cable repairs, offering a secure and weatherproof enclosure to protect your spliced connections.



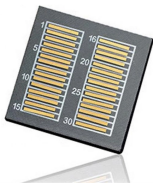
The IP67-rated fiber optic welding machine joint box used to house ...



supply High, Medium and Low Voltage cable accessories in line with all set high quality standards in Botswana.



Equipped with a double-port SC/UPC configuration, this junction box allows for efficient connection and distribution of fiber optic cables, enhancing versatility for various setups.



The IP67-rated fiber optic welding machine joint box used to house and protect the fiber optic splices so that they do not interfere with production activities.



Optical Fiber Waterproof Connection Box Outdoor IP67 SC Singlemode Fiber Optic Protection Box. Protect the optical fiber from dust and damage, waterproof, snow-proof, rain-proof, dust-proof, dirt ...



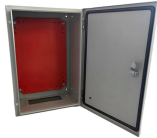
With 2 lockable latches, 2 cable clamps, 2 mounting holes and 2 cable ties, it creates a watertight sealing space, keeps outdoor & indoor Fiber optic cable connection dry and safety, easy to place and ...



Compact and aesthetically pleasing, it provides economical and reliable protection for exposed single-fiber connectors in indoor and outdoor applications. This box simplifies installation ...



Optical Fiber Waterproof Connection Box Outdoor IP67 SC Singlemode Fiber Optic Protection Box. Protect the optical fiber from dust and damage, waterproof, snow-proof, rain-proof, dust-proof, dirt ...



Provides extremely economical and optimal protection for exposed single fiber connectors. Suitable for 2.0*3.0mm FTTH drop fiber cable and normal fiber cable. Max 2 fibers connection (LC Connector). ...

Contact Us

For more information, pricing, or custom solutions, please contact us:

Website: <https://samastersbaseball.co.za>

Email: sales@samastersbaseball.co.za

Phone: +27 63 874 2095

Address: 15 Innovation Drive, Technopark, Stellenbosch, 7600, South Africa

This document is for informational purposes only. Specifications subject to change without notice.

