

Benefits of Switch Port Aggregation



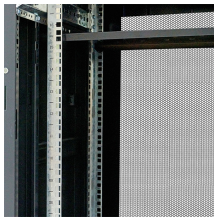
Overview

Port aggregation can increase maximum throughput, and allow for network redundancy. It does this by splitting traffic across multiple ports instead of forcing clients to use a single uplink port on a switch. Link aggregation is sometimes called by other names: The most common device combinations involve connecting a switch to another switch, a server, a network attached storage (NAS). An aggregation switch is a network device that consolidates traffic from multiple access switches, wireless access points, or other edge devices and forwards it to core switches or routers. The LAG balances. The following sections provide information about port aggregation, aggregation group, load balance, system priority and port priority.

Benefits of Switch Port Aggregation



Port aggregation is particularly beneficial in high-demand environments where a single port may not be sufficient to handle the load. By ...



Increased Bandwidth: By combining multiple physical interfaces, you increase the total available bandwidth. **Redundancy and Fault Tolerance:** If one or more links in the aggregation fail, ...



Port aggregation can increase maximum throughput, and allow for network redundancy. It does this by splitting traffic across multiple ports instead of forcing clients to use a single uplink port on a switch.



They support link aggregation protocols such as Link Aggregation Control Protocol(LACP) and Static Link Aggregation, which allow multiple physical links to be combined into a single logical connection. ...



Ethernet port aggregation, also known as link aggregation, is a networking technique that combines multiple Ethernet network links in parallel to increase throughput beyond the limits of any ...



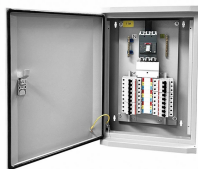
Port aggregation is particularly beneficial in high-demand environments where a single port may not be sufficient to handle the load. By linking several switches together, a network ...



Link aggregation combines multiple interfaces into one, making data transfers smoother and networks more reliable. It balances loads across ports, improving speed without adding complexity.



Port aggregation is a networking technique that combines multiple physical ports on a switch into a single logical link. By splitting traffic across these aggregated ports, it increases ...



Port aggregation allows you to group multiple physical ports into one unit. Port aggregation is useful for implementing load balancing and provides a redundant link backup. To allow port aggregation, the ...



Link aggregation allows you to combine multiple Ethernet links into a single logical link between two networked devices.



Aggregating multiple links between physical interfaces creates a single logical point-to-point trunk link or a LAG. The LAG balances traffic across the member links within an aggregated Ethernet bundle and ...

Contact Us

For more information, pricing, or custom solutions, please contact us:

Website: <https://samastersbaseball.co.za>

Email: sales@samastersbaseball.co.za

Phone: +27 63 874 2095

Address: 15 Innovation Drive, Technopark, Stellenbosch, 7600, South Africa

This document is for informational purposes only. Specifications subject to change without notice.

