

# Are laser diodes universal



## Overview

Nowadays semiconductor laser diodes are by far the most common method of generating laser light, and the diodes themselves can be obtained quite cheaply. Laser diodes are used in all areas of electronics from domestic equipment, through commercial applications to hash. A laser diode (LD, also injection laser diode or ILD or semiconductor laser or diode laser) is a semiconductor device similar to a light-emitting diode in which a diode pumped directly with electrical current can create lasing conditions at the diode's junction. Much of what will be discussed will be in general terms of laser diode performance, warnings, and tips.

## Are laser diodes universal



Learn about laser diode technology, including history, construction, & applications - everything you need to know about them from the basics to more advanced concepts.



While initial diode laser research was conducted on simple P-N diodes, all modern lasers use the double-hetero-structure implementation, where the carriers and the photons are confined in order to ...



Laser diodes (LD) are semiconductor devices that convert electrical energy into high-power optical energy. These devices are currently used in the fields of telecommunications and ...



Laser diodes are the most common type of laser in the world, found in everything from fiber optic cables and barcode scanners to smartphone face-recognition sensors and industrial metal ...



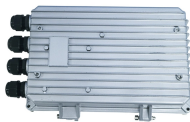
A laser diode is a semiconductor device that emits coherent light via stimulated emission, which is more complex and responsive than a light-emitting diode (LED).



All the laser diodes described above, except the VCSEL laser diodes, emit beams from the edge of the active layer, and can be called edge emitting laser diodes.



There are various commercially available circuits for powering laser diodes that range from devices generating continuous laser light to others allowing light modulation which is of special interest for ...



Laser Diode Tutorial The purpose of this laser diode tutorial is to provide the information necessary to create a long lifetime, stable laser diode system. Much of what will be discussed will be in general ...



A laser diode is a semiconductor device that is identical to a light-emitting diode (LED) and converts electrical energy into light. In this article, we'll learn about their development, working, ...



A diode-pumped solid-state laser uses a diode to pump energy into a crystal or glass medium that produces the laser beam. In contrast, a diode laser ...



A diode-pumped solid-state laser uses a diode to pump energy into a crystal or glass medium that produces the laser beam. In contrast, a diode laser generates the laser light directly ...

## Contact Us

For more information, pricing, or custom solutions, please contact us:

Website: <https://samastersbaseball.co.za>

Email: [sales@samastersbaseball.co.za](mailto:sales@samastersbaseball.co.za)

Phone: +27 63 874 2095

Address: 15 Innovation Drive, Technopark, Stellenbosch, 7600, South Africa

This document is for informational purposes only. Specifications subject to change without notice.

