

# **Analog Networking Core Switch**



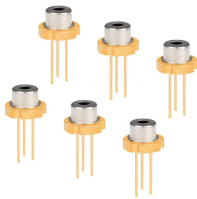
## Analog Networking Core Switch



This guide breaks down exactly what a core switch does, how it fits into the three-tier network model, and the exact device-count thresholds that dictate when your business actually ...



A core switch is the backbone of a large-scale network, designed to handle massive volumes of traffic with ultra-low latency and maximum reliability. Sitting at the top of the hierarchical model, core ...



Unlike access switches, which connect directly to end-user devices, the core switch focuses on aggregating and routing traffic between other switches, minimizing latency and ...



While both core and normal switches play crucial roles in maintaining efficient data flow, their functionality and applications vary significantly. This guide unpacks the core differences, helping ...



What is a Core Switch? It is a powerful backbone switch in the center of the network core layer, which centralizes multiple aggregation switches to the core and implements LAN routing. The normal edge ...



Explore the core switch's role as the backbone of your network. Discover key differences, uses, and insights into layer 3 core switch technology.



Analog Devices' Ethernet transceivers and switches deliver robust, IEEE® 802.3-compliant connectivity for real-time communication at the network edge. Built for reliability in harsh industrial and automotive ...



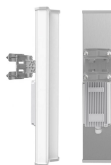
Comprehensive guide to Core, Distribution, and Access Switches. Roles in the network and important parameters explained.



Discover the key differences between core switches and ordinary switches. Learn how core switches enhance network reliability, scalability, and performance for ...



The ToR switches are electronic packet switches while the core switches are a combination of optical and electronic switches. The electronic switches are used for all to all communication among pods, ...



Discover the key differences between core switches and ordinary switches. Learn how core switches enhance network reliability, scalability, and performance for data centers with advanced features like ...

## Contact Us

For more information, pricing, or custom solutions, please contact us:

Website: <https://samastersbaseball.co.za>

Email: [sales@samastersbaseball.co.za](mailto:sales@samastersbaseball.co.za)

Phone: +27 63 874 2095

Address: 15 Innovation Drive, Technopark, Stellenbosch, 7600, South Africa

This document is for informational purposes only. Specifications subject to change without notice.

