

100 Gigabit Fiber Optic Switch



100 Gigabit Fiber Optic Switch



Your most affordable, compact, energy-efficient doorway to the world of 100 Gigabit networking. This switch is the next step in upgrading existing 10 or 25 Gigabit networks.



Our ESW-2206 optical fiber switch has 2 fiber optic SFP module ports. It supports dual optical SFP modules and gigabit transmission speeds.



Search Newegg for 100gb switch fiber. Get fast shipping and top-rated customer service.



Ethernet Switches with fiber uplink ports or all fiber switches, commercial grade, managed and unmanaged and PoE enabled are all available in this section.



The Cisco QSFP 100-Gb SR1.2 Bi-Directional (BiDi) transceiver is a pluggable optical transceiver with a duplex LC connector interface for short-reach data communication and ...



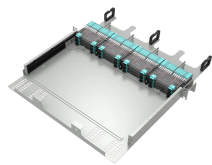
The 24 port Managed Fiber switch has the capability of Fast Ethernet, Gigabit Ethernet and 10 Gig Ethernet in one unit for solutions to most all fiber environments.



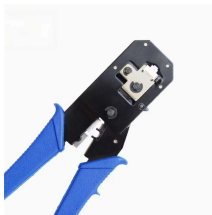
FS 100G Switches offer high programmability and scalability, designed for large enterprises and hyper-converged infrastructure (HCI) networks. Learn more!



Discover fiber switches designed for reliable network connectivity. Browse 10G, 2.5G, and gigabit options to expand your bandwidth.



We offer solutions that provide seamless transmission and conversion from Ethernet media to multimode or singlemode fiber. Our Ethernet network switches with fiber ports comes in managed or ...



This makes the S7300-24X2C 10G switch an ideal choice for high-performance computing, enterprise networks and high-end campus centers, providing a more stable and reliable network architecture for ...

Contact Us

For more information, pricing, or custom solutions, please contact us:

Website: <https://samastersbaseball.co.za>

Email: sales@samastersbaseball.co.za

Phone: +27 63 874 2095

Address: 15 Innovation Drive, Technopark, Stellenbosch, 7600, South Africa

This document is for informational purposes only. Specifications subject to change without notice.

